



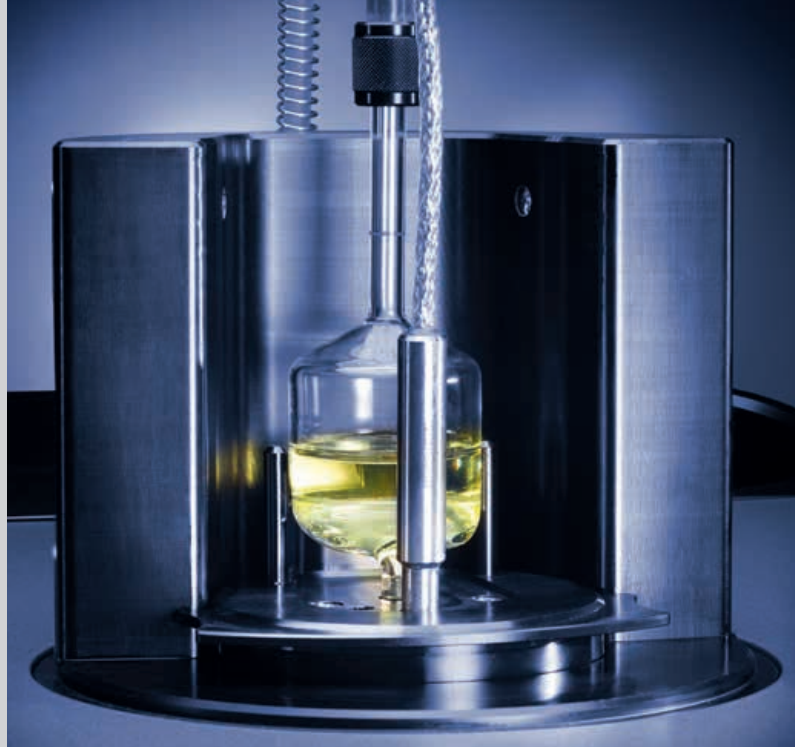
Callisto 100

Cold Filter Plugging Point Tester

Callisto 100 Cold Filter Plugging Point Tester

The fully automated and compact CFPP tester Callisto 100 determines the low-temperature operability in diesel fuel, biodiesel, diesel blends and gas oils.

Callisto 100 comes with a newly developed state-of-the-art Peltier element concept which allows the connection of a methanol-free cooling system. It ensures outstanding homogeneity of the cooling jacket, which is the most critical and decisive parameter for a correct CFPP value determination.



Benefits at a Glance

- ▶ Error-free detection
- ▶ Easy and intuitive operation
- ▶ High sample throughput
- ▶ Convenient cleaning routines

Convenient Operation

- ▶ Thanks to contact-free infrared detection technology the complete filtration unit is easily accessible
- ▶ Excellent detection, even when the pipette is frosted
- ▶ Pre-programmed standard test methods to select from the menu allow for immediate start of the test
- ▶ Large color display indicates the sample and jacket temperature in real time
- ▶ Graphical information about the aspiration and flow back times to observe the temperature behavior of the sample
- ▶ Statistical evaluation of test results according to the test method
- ▶ User-friendly calibration procedures for the temperature and vacuum
- ▶ Automated pre-cleaning routine

Customized User Flexibility

- ▶ Also applicable for manual cloud and pour point measurements (complete test kit optionally available)

Standard Methods

ASTM D6371, EN 116, EN 16329, JIS K 2288, IP 309

With optional kit for manual cloud and pour point measurement:

ASTM D2500, ISO 3015, EN 23015, JIS K 2601, IP 219 (cloud point)
ASTM D97, ASTM D5853, ISO 3016, JIS K 2269, IP 15, IP 441 (pour point)

Technical Specifications

Measuring range	-60 °C to 45 °C
Cooling profiles	Programmable stepped or linear (from 6 °C/h to 100 °C/h)
Calibration	<ul style="list-style-type: none">▶ Automatic calibration routine for sample and jacket temperature and vacuum measurement▶ Temperature probe correction table
External cooling units	<ul style="list-style-type: none">▶ User-supplied or available from Anton Paar as an accessory▶ Cooling power: 280 W at -20 °C
Data memory	<ul style="list-style-type: none">▶ 1000 results▶ 90 user-defined programs
Data export	<ul style="list-style-type: none">▶ Connectivity via USB and LAN, e.g. to export test results as XLS or PDF files
Interfaces	4x USB, 1x RS232, 1x LAN, 1x VGA
Power supply	AC 100 V to 240 V, 50 Hz/60 Hz, 290 VA
Dimensions	340 mm x 580 mm x 310 mm (W x D x H)
Weight	14 kg

Your distributor: