

Mastering the challenges
in your production

Process
engineering
solutions



At your **production sites**, you have to:



**MEET
STRINGENT
QUALITY
STANDARDS?**



**REDUCE
COSTS?**



**DEAL WITH
LIMITED
AVAILABLE
RESOURCES?**

**Anton Paar provides solutions for process monitoring, analysis,
and process control.**

**Our process engineering solutions are customizable to fit
whatever space you have – minimum installation effort required.**

**Our experts take care of your project from start to finish.
They provide extensive field service and support to make sure
your production keeps running smoothly.**

**Service and support are available directly from our service
points worldwide.**



Your industry: Food and beverage

**Hygienic solutions to guarantee
in-spec production:**

- Process control with customized, skid-mounted systems for in-line blending, carbonating, and dosing
- Analysis with sensor-based systems measuring CO₂, O₂, alcohol content, and many other parameters



Your industry: Chemical and petroleum

**Our resistant and explosion-
proof solutions feature sensors
designed for operation in harsh
and hazardous environments:**

- Process monitoring of the concentration, viscosity, density, and other physical properties of chemical and petroleum products
- Customizable process monitors to meet your requirements, including a broad variety of process sensors

Your solution for turnkey process control in beverage production

Flex-Blend is a skid-mounted process system for in-line blending, carbonating, and dosing in beverage production. It is modular and compact and can be implemented even in plants with limited space.



Beer



Beverages



Liquid food

Flex-Blend features:

- All electrical and mechanical components mounted on a skid, wired and tested in the factory for fast installation at your site
- A powerful controller (PLC) for local operation, automated control, and closed-loop control of blending and carbonating processes
- The well-proven measuring technology of in-line beverage analyzers from Anton Paar
- Remote operation by the supervisory control system

The Flex-Blend series, for nearly all beverage types:

- Beer, carbonated or non-carbonated drinks, and juices
- Wine and wine-based mixed beverages
- Carbonated water
- Liquid food



Your process under control – Flex-Blend 7000 series

CO₂ dosing for all beverage types with maximum precision

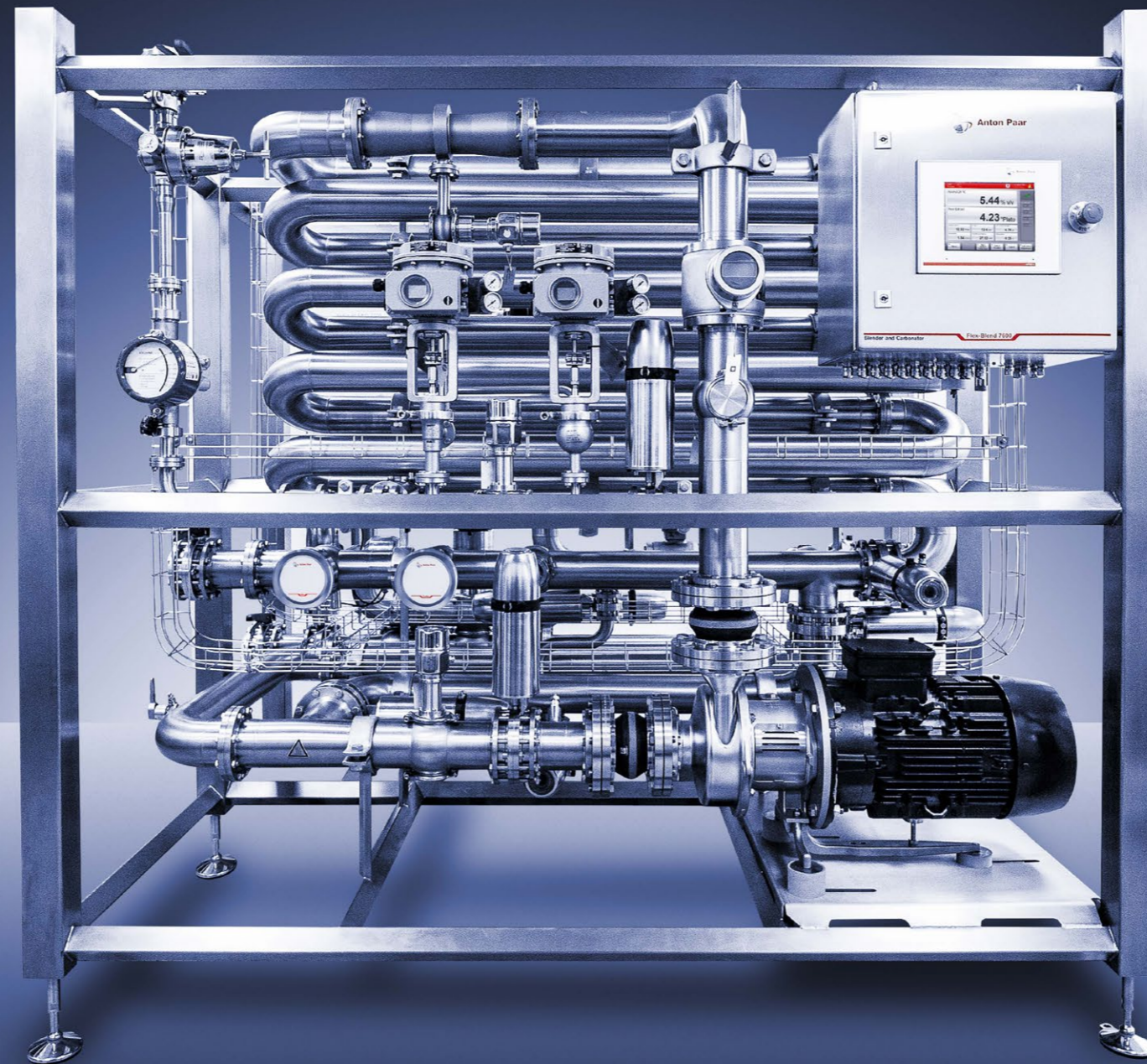
- Use Flex-Blend for all beverages requiring dosing from 0.1 g/L CO₂ to 7 g/L CO₂.
- Rely on complete mixing and dissolving by the integrated pump and a highly efficient CO₂ injector combined with a thoroughly dimensioned mixing section.

Minimal integration effort

- Flex-Blend comes with all required electrical and mechanical components in one compact skid-mounted system. It is pre-configured, wired, and factory-tested when delivered, and requires only a few connections and adaptations on-site.

Anton Paar sensors inside – for reliable quality and minimum product loss

- Flex-Blend 7000 utilizes the high-performance, time-tested Anton Paar sensors for real-time blending, carbonating, and dosing control, so you achieve the highest production quality while minimizing your losses.
- Benefit from fast and precise mixing and dosage control due to the sensors' short measuring and response times.



Direct control of what matters

- Flex-Blend 7000 has an optimized controller structure and dual control valve design which make sure you always have your mixing ratio and dosing under control, enabling you to respond quickly to process variations and disturbances.
- Flex-Blend 7000 measures and directly controls concentrations such as CO₂, extract, and alcohol content.
- Secondary process parameters such as flow rates, temperatures, and pressures are measured constantly and support coarse controller adjustment and plausibility checks.

Low operating costs

- The sensors are maintenance-free with service limited to replacement of wear parts.
- Maintenance can be performed quickly as valves and pumps are easily accessible.

Your solution for full in-line beverage analysis

Animo 5100 analyzes all relevant process control parameters in the production of all beverage types. It is a complete multiparameter measuring system with integrated analysis software for quality monitoring directly at the filling line. The system either comes in a modular framework construction that can easily be tailored to your production line, or as a pipe assembly which can be directly integrated into the production line.

Animo 5100 offers:

- Accurate and reliable alcohol and extract measurement with Anton Paar's L-Com 5500 sensor
- Maintenance-free CO₂ measurement with Anton Paar's Carbo 6100/6300 sensors
- Real-time process monitoring via the mPDS 5 evaluation unit with zero effort
- Traceability of your production quality from your desktop with the integrated analysis software Davis 5
- Integration of additional sensors like flow, conductivity, or color according to customers' requirements



Beer



Beverages



Liquid food



Your solution for monitoring chemicals and petroleum products

Anton Paar's process monitors are easy to integrate and are built to meet your requirements. Let us know what you need. We will implement our own or third-party sensors to fit your process, space, and material needs.

Anton Paar offers:

- Solutions with the highest precision and reliability
- Robust solutions for hazardous areas (Ex zones) as well as systems for chemically aggressive applications: smart sampling and measuring systems combined with an evaluation unit which delivers primary and derived parameters to your process control system
- Automatic interlock or basic dosing control via control unit
- Davis 5 analysis software for data analysis and reporting right from your desktop
- Process monitors which are pre-assembled, wired, tested, and calibrated in the factory, and strongly reduce the effort needed to install, integrate, and commission them at your site



Chemical



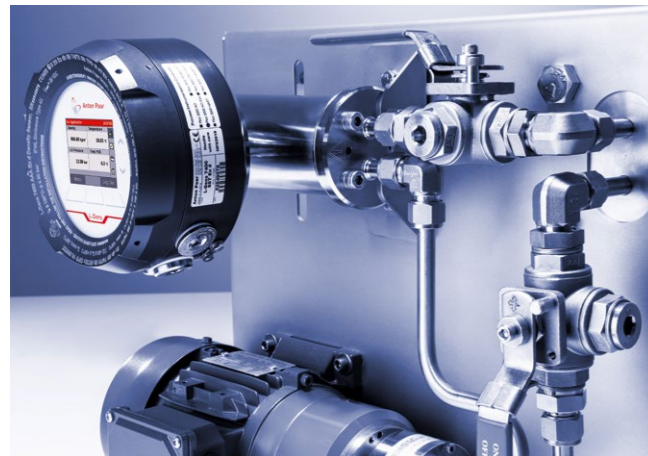
Petroleum
(upstream,
midstream,
downstream)



Monitor chemicals and petroleum products

Reliable monitoring and control of quality parameters, interlock etc.

Our process monitors are used in the production and processing of chemicals and petroleum products. We have solutions for all fields of application: low-viscosity fluids, liquid gases, and media with higher viscosity.



The process monitors



The analysis software



The control unit

Anton Paar process monitors are smart sampling and measuring systems combined with an evaluation unit which delivers primary and derived parameters to the process control system, featuring many highlights:

- Reliable and accurate measurements under all process conditions, independent of media properties
- Easy installation thanks to pre-assembling and calibration in the factory
- Compactness and customization to your space
- Safe operation of all integrated components
- Various operating modes for measurement, cleaning, and sample drawing

Process monitoring can be simplified by using the Davis 5 analysis software for data logging and quality reporting – right from your desktop, control room, or calibration lab. Using this software, you benefit from:

- Statistical evaluation and traceability of production line performance and product quality
- Tracing of calibration and adjustment activities, and data for reliable measuring quality checks
- Smooth transfer of laboratory reference values to the process instruments

Process monitors are optionally equipped with a PLC-based controller which is programmed according to your process requirements and allows for:

- Real-time monitoring of product specifications
- Online evaluation of data for quick analysis
- Basic automation functions like machine interlock and simple dosing control
- Stand-alone or remote operation by the supervisory control system

SCAN TO CONTACT



Get in touch with Anton Paar's process engineering team

to find the ideal process monitoring solution for your plant.

